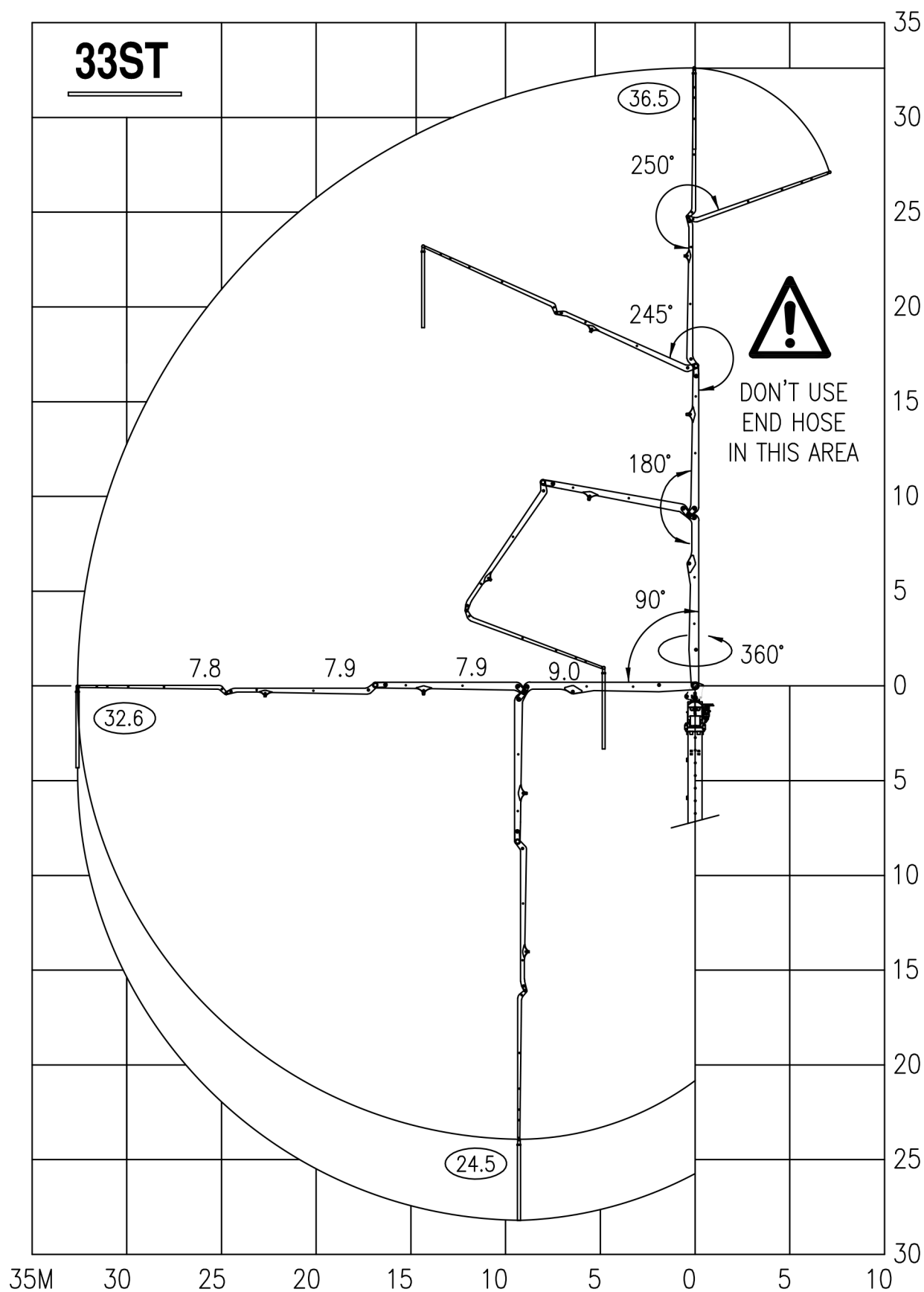
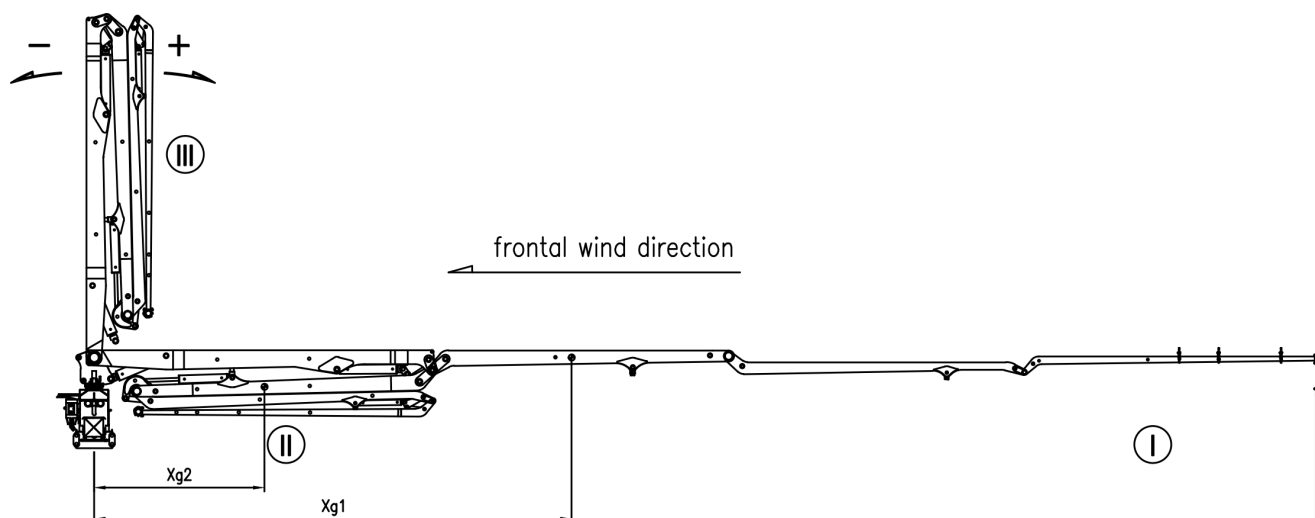


14	CONCRETE PARTS	For 20M
13	CONTROL SYSTEM	CABLE, RADIO REMOTE
12	ELECTRIC MOTOR	30HP*4P*380V*50Hz
11	PLATFORM	2,000*2,600
10	LADDER	L1,830—3EA
09	LADDER	L1,870—2EA
08	CLIMBING DEVICE	D100*d80*ST730
07	FLOOR FRAME	3 Set
06	CROSS BASE	1 Set
05	MAST	10m*2
04	ADAPTER	1 Set
03	PEDESTAL ASS'Y	1 Set
02	COLUMN ASS'Y	1 Set
01	BOOM ASS'Y	33Z-4sec
No.	Description	Specification





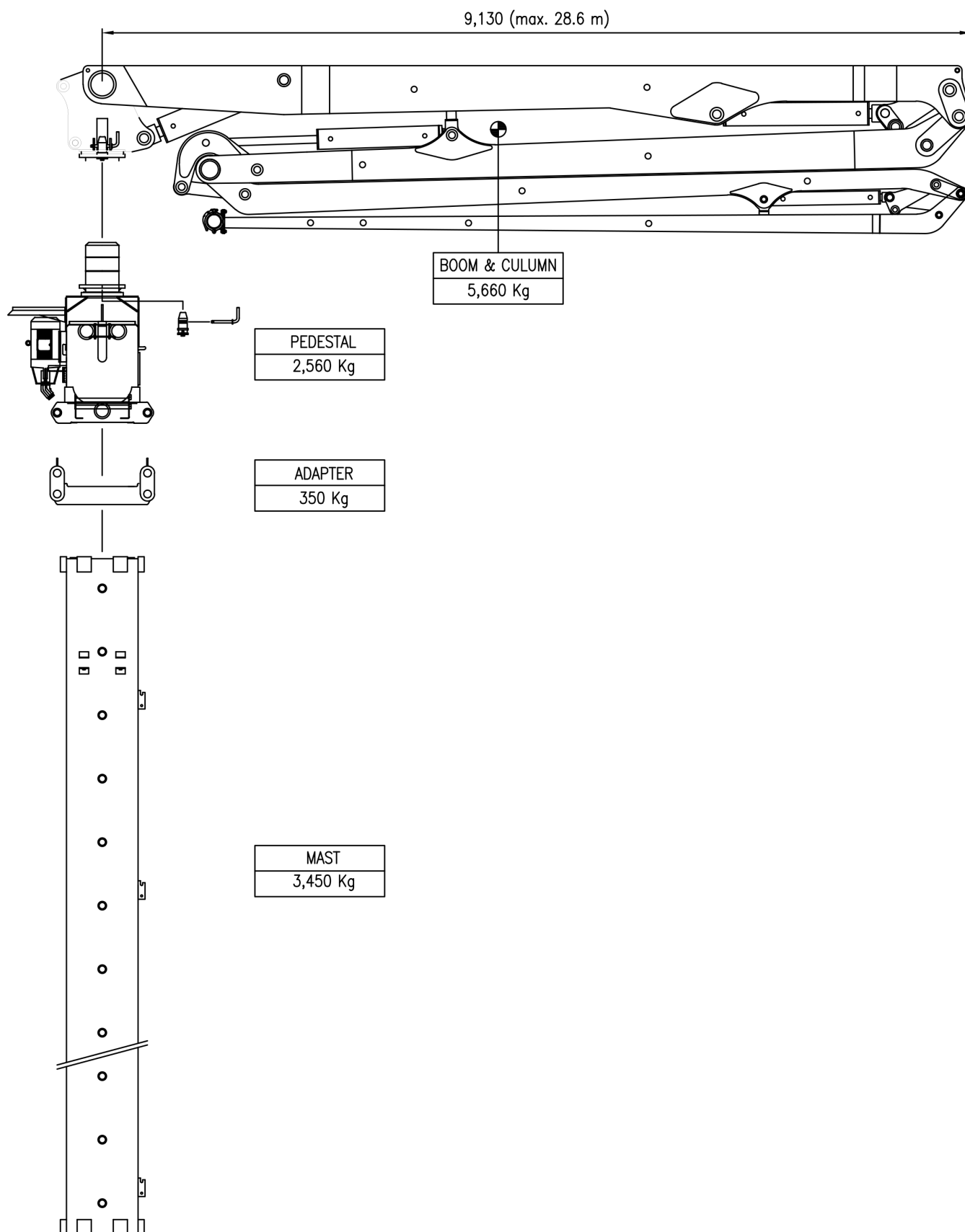
MOMENT [KNm]	
Position of boom	Moment (boom side → +)
I with concrete in pipe-line	→ 966 KNm
II without concrete in pipe-line	→ 235 KNm
III without concrete in pipe-line	→ 30 KNm

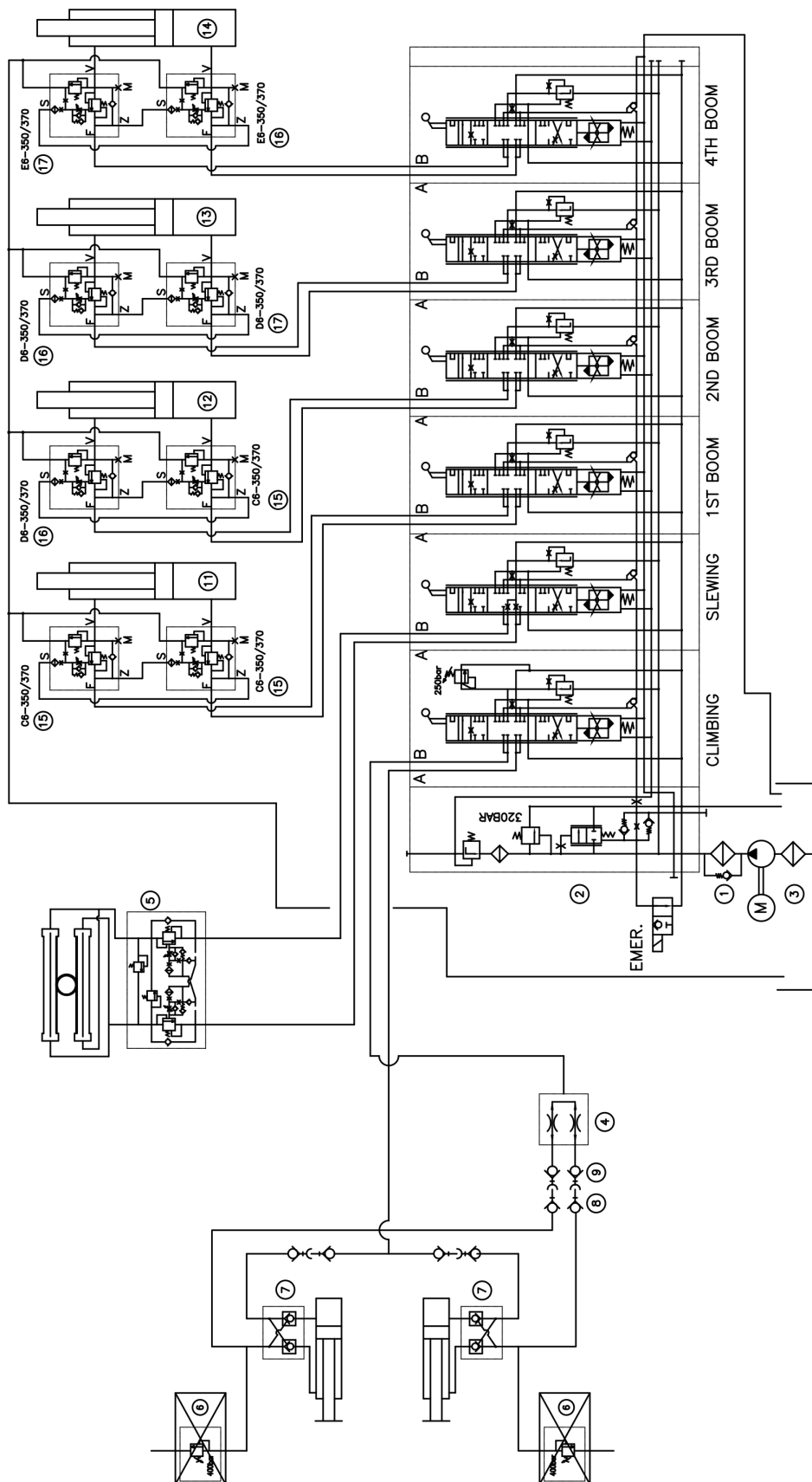
Total weight [Kg] - boom & pedestal (with concrete)			
In operation	9,300Kg	Out of operation	8,200Kg

Wind—exposed areas [m²]			
Position of boom	Wind-exposed area	Center of gravity distance	remark
I	14.0m²	Xg1 = 11.4m	Wind surface perpendicular to frontal wind
II	14.0m²	Xg2 = 4.0m	
I/II	4.9m²	Ys = 1.3m	Exposed area in frontal wind
III	9.4m²	Ys = 4.0m	

Comment: lateral thrust due to wind is calculated according to DIN 1055				
Absolute altitude [m]	0~8	8~20	20~100	Above 100
W[N/m²]	800	1,280	1,760	2,080

F = W x A		
F: Wind force	W: Lateral thrust due to wind	A: Wind surface area

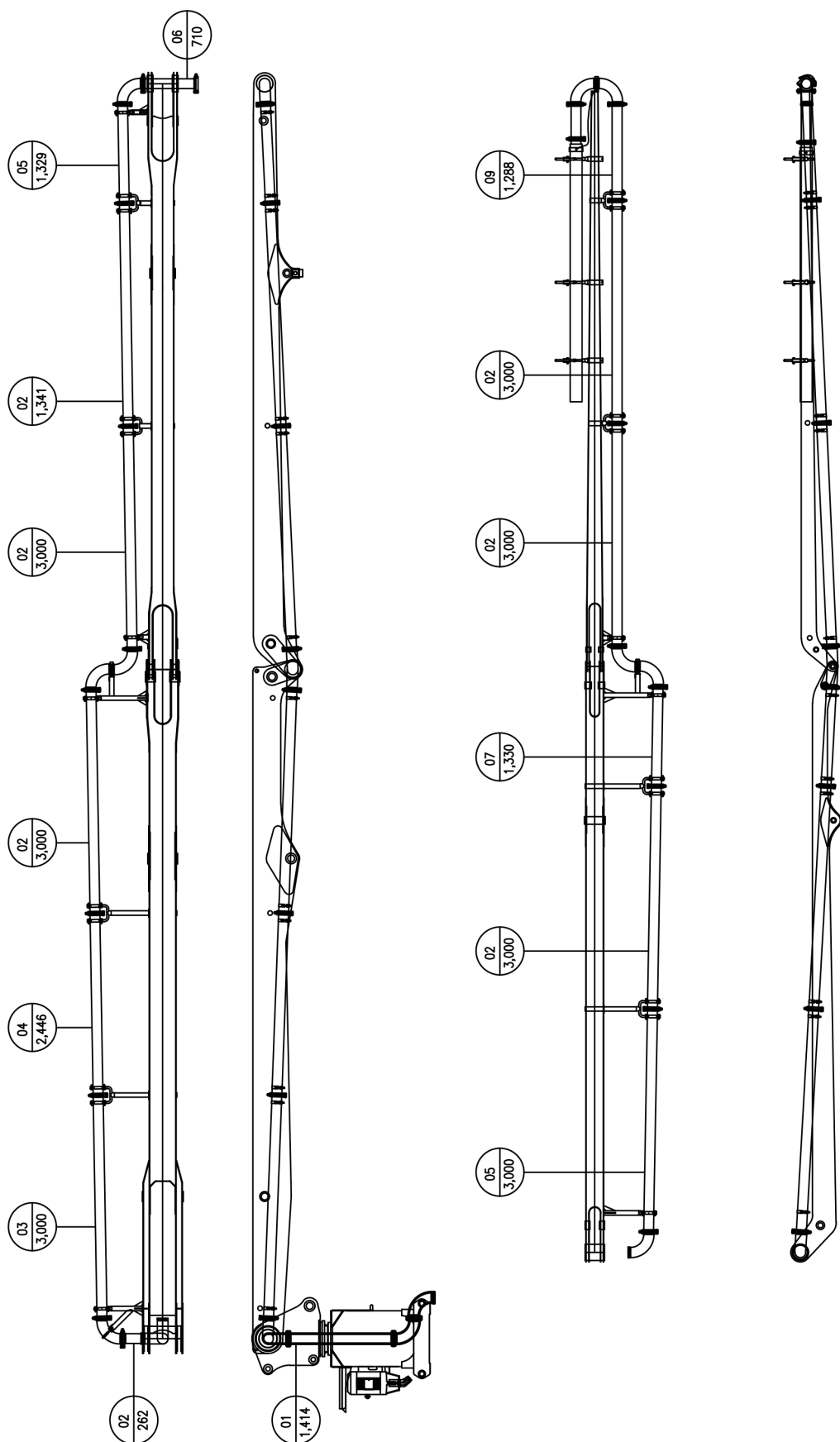




NO.	PARTS NO.	PARTS NAME	QTY	REMARKS	NO.	PARTS NO.	PARTS NAME	QTY	REMARKS
17	T577D3537	INTER LOCK V/V	2	LHM 33H-15-50(350/370)	9	I5-A00039	QUICK COUPLING FEMALE	6	
16	T577C3537	INTER LOCK V/V	3	LHM 33H-15-50(350/370)	8	I5-A00038	QUICK COUPLING MALE	6	
15	T577B3537	INTER LOCK V/V	3	LHM 33H-15-50(350/370)	7	57-7039-00	PILOT CHECK VALVE	4	
14	37117400	4TH BOOM CYL.	1		6	57-7088-00	RELIEF VALVE	2	HP 15 100/125/150/175/190/210/230
13	37117300	3RD BOOM CYL.	1		5	HB050500	DIAPHRAGM VALVE	1	HP 15 100/125/150/175/190/210/230
12	37117200	2ND BOOM CYL.	1		4	57-7057-00	FLOW DIVIDER VALVE	1	HP 15 100/125/150/175/190/210/230
11	37117100	1ST BOOM CYL.	1		3	59-0022-50	SUCTION FILTER	1	HP 15 100/125/150/175/190/210/230
10	15-0931-00	CLIMBING CYLINDER	2		2	HB050800	MAIN CONTROL VALVE	1	HP 15 100/125/150/175/190/210/230
9	15-0931-00	CLIMBING CYLINDER	2		1	HB050200	MAIN FILTER	1	HP 15 100/125/150/175/190/210/230

CONTROL VALVE

PSL41F/320/3 - 32L 40/40A 250 B 250/EA
 - 320 10/10/EA
 - 32J 40/40/EA
 - 32J 40/25/EA
 - 32J 16/25/EA
 - 32J 25/16/EA-E1-G24



SCOPE of SUPPLY for CPB33ST-Z PLACING BOOM

No.	Description	Specification	Q'ty	Remark
1	boom assembly	33M 4Z Boom	1st	
	1 1st boom	L=9,000mm		
	2 2nd boom	L=7,880mm		
	3 3rd boom	L=7,880mm		
	4 4th boom	L=7,840mm		
	5 End hose	L=4,000mm		
2	Column Assembly	KING PIN Type	1 set	
3	Pedestal Assembly		1 set	
	1 Assembled Hydro. Piping & Hose			
	2 Inside : Hydro. Oil Tank	250 liter (ISO VG 46)		
	3 Mounted Concrete Pipe & Elbow Inside	125		
4	Control Parts		1 set	
	1 Power Motor	415V, 4P, 30HP(22.5KW), 50Hz		
	2 Main Control Panel	415V(240V) / DC24V		
	3 Control			
	Radio Remote Control	Hetrinocs 4TH P/P Type (Boom		
	contol)Cable(wire) Remote Control	4TH on/off Type		
	Hard Wire Climbing Control	DC24V		
	4 Pump & Valves	Pump: 23cc/rev, PSL41		
	5 Wire & Harness for Climbing	Power 22SQ/VCT0.75SQx8Px20M		
	6 Hydro. Hose & Pipes for Climbing			
5	Concrete Pipes & Brackets	L3,000-7pcs	1 set	
6	Mast			
	1 Square Column	750x750 - L10,000	2ea	
	2 Ladder	Ladder 1: 2ea, Ladder 2: 1ea	1 set	
	3 Platform	Platform 2,000 x 2,000	1 set	
	4 Bolt & Nut for Mast Assembly	M30 x 400L	48 set	
7	Climbing System			
	1 Floor Frame 3sets	1,500 x 1,500	3 set	
	2 Jack Cyinder & Jacking Bars	D85xd65-ST 730	2 set	
8	Installation Accessories		1 set	
9	Options Parts			
	1 Cross Base	2,985 x 2,985 x 693	1 ea	
	2 Adapter	1,100x1,100x400	1 ea	
10	Paint			
	1 STANDARD	RAL 1007 (Daffodil Yellow)		

WEIGHT List for CPB33ST-Z PLACING BOOM

No.	Description	Specification	W.G	Remarks
1	Boom ass'y	37M 4Z Boom	5,489	
2	Column ass'y	Pinion Gear Type	700	
3	Pedestal ass'y		2,050	
4	Control Parts		15	
1	Power Motor	415V, 4P, 30HP(22.5KW), 50 Hz	210	
2	Main Panel	415V / DC24V		
3	Pump & Valves	A2F23/61L-PAB06, PSL41	60	
4	Wire & Harness		75	
5	Hydro. Hose & Pipes		30	
5	Concrete Pipes & Brackets	for 20 M	398	
6	Mast	10M x 2	6,900	
7	Climbing System		30	
1	Floor Frame 3sets		708	
2	Cylinder & Bars		248	
3	Ladder & Platform		320	
8	Installation Accessories	Wedge & Clamps	439	
9	Option Part			
1	Cross Base	2,985 x 2,985 x 693	1,300	
2	Adapter	1,100 x 1,100 x 400	350	
TOTAL			19,322	